



CRYPTON SOLUTIONS II BY KRAVET

ACCOLADE | NO REPEAT | 61% RAYON, 23% POLYESTER, 15% COTTON, 1% NYLON | 60K DOUBLE RUBS



blackberry



flax



lemongrass



opal



persimmon



sapphire



shadow



silver



thistle

BEAMING | NO REPEAT | 66% RECYCLED POLYESTER, 27% POLYESTER, 6% RAYON, 1% METALLIC | 55K DOUBLE RUBS



dune



paprika



pewter



sapphire



shadow



tusk



wasabi

CATO | NO REPEAT | 52% COTTON, 48% POLYESTER | 51K DOUBLE RUBS



caliente



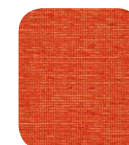
citrine



grass



grotto



mandarin



moonstone

MILA | RANDOM | 94% POLYESTER, 6% RECYCLED POLYESTER | 51K DOUBLE RUBS



beach glass



ginger



sunflower



toffee





CRYPTON SOLUTIONS II BY KRAVET

WATERLINE | RANDOM | 72% POLYESTER, 27% RECYCLED POLYESTER, 1% METALLIC | 51K DOUBLE RUBS



lily pad



mandarin



mercury



silver dune

TRANSPORT | 3.5H X 2.75V | 68% POLYESTER, 32% RAYON | 51K DOUBLE RUBS



casbah



copper



fiesta



sapphire



seaglass



wasabli

FIORINA | 1H X 1V | 66% POLYESTER, 34% RECYCLED POLYESTER | 51K DOUBLE RUBS



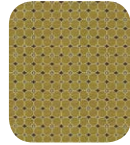
blue slate



capri



lemon



lemongrass



mandarin



pear



shadow

LITTLE BOXES | 1.5H X 1.5V | 67% RECYCLED POLYESTER, 33% COTTON | 51K DOUBLE RUBS



copper



fusion



metal



seaglass



seaside



spice





CRYPTON SOLUTIONS II BY KRAVET

ACTIVATE | 2.5H X 3.5V | 50% POLYESTER, 50% RECYCLED POLYESTER | 51K DOUBLE RUBS



grass



limestone



paprika



pewter



thistle



tidal

GATEWAY | 2.5H X 2.5V | 55% RECYCLED POLYESTER, 30% POLYESTER, 15% COTTON | 51K DOUBLE RUBS



casbah



coastal



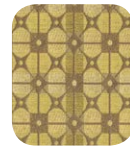
copper



limestone



lotus



mimosa



sapphire

LUCKY CHARM | 7.5H X 5V | 100% POLYESTER | 51K DOUBLE RUBS



beach glass



citrus



galaxy



guava



tigerlily



toffee

MASHRU | 4H X 2V | 100% POLYESTER | 51K DOUBLE RUBS



citrus



ginger



nomad



shadow



tidal





CRYPTON SOLUTIONS II BY KRAVET

STRAIGHT TALK | 3.5H X 3V | 100% POLYESTER | 51K DOUBLE RUBS



bluegrass



citrus



fiesta



galaxy



guava



lemongrass



sesame



tigerlily

KAMARA | 4H X 8.5V | 62% RAYON, 38% POLYESTER | 51K DOUBLE RUBS



azalea



canyon



copper



seaglass

JAPONICA | 2.5H X 1.5V | 83% POLYESTER, 17% RECYCLED POLYESTER | 51K DOUBLE RUBS



blue dot



chili



citron dot



lilypad



mandarin dot

MISSING LINK | 3.5H X 10V | 43% COTTON, 35% POLYESTER, 22% RECYCLED POLYESTER | 51K DOUBLE RUBS



birch



fiesta



seaside



spellbound



stonehenge







CRYPTON SOLUTIONS II BY KRAVET

VOLTAGE | 2H X 4.5V | 57% RECYCLED POLYESTER, 43% POLYESTER | 51K DOUBLE RUBS



burnish



patina



silver



water

LITTLE POP | 4H X 4V | 100% POLYESTER | 51K DOUBLE RUBS



blossom



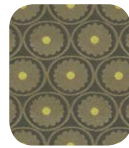
bluegrass



lemon



mandarin



shadow

STIRRED UP | 7.5H X 7.5V | 75% POLYESTER, 25% RECYCLED POLYESTER | 51K DOUBLE RUBS



grotto



mandarin



sapphire



shadow

WISHFUL | 14H X 5V | 45% POLYESTER, 32% RECYCLED POLYESTER, 19% RAYON, 4% COTTON | 51K DOUBLE RUBS



bramble



driftwood



opal



pewter





CRYPTON SOLUTIONS II BY KRAVET

DAY DREAMER | 5H X 6V | 67% POLYESTER, 33% COTTON | 51K DOUBLE RUBS



grotto



lemongrass



mandarin



seaside

CIRCLE TIME | 4.5H X 4V | 100% RECYCLED POLYESTER | 51K DOUBLE RUBS



blackberry



blue note



dragonfly



java

