



CLEMATIS | 15H X 14.9V | 100% POLYESTER | 54K DOUBLE RUBS



auburn



black



chestnut



chinchilla



empire



graphite



lagoon



light grey



pumpkin



vanilla



yellow

DROPLET | 9.4H X 7.5V | 6% RECYCLED POST INDUSTRIAL POLYESTER, 18 RECYCLED POST CONSUMER POLYESTER, 76% POLYESTER | 51K DOUBLE RUBS



aqua



auburn



charcoal



chestnut



chinchilla



empire



lagoon



sunset



vanilla

ORNAMENTAL | 15H X 14.4V | 100% POLYESTER | 51K DOUBLE RUBS



auburn



black



chestnut



chinchilla



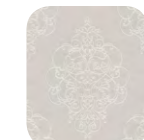
empire



graphite



lagoon



light grey



pumpkin



sprig



vanilla



yellow





SHADOW | 7.5H X 8.3V | 17% RECYCLED POST CONSUMER POLYESTER, 31% RECYCLED POST INDUSTRIAL POLYESTER, 52% POLYESTER | 54K DOUBLE RUBS



caribbean



chestnut



chinchilla



dove



graphite



sunset



water lily

WICKER | .4H X .8V | 67% POLYESTER, 16% RECYCLED POST CONSUMER POLYESTER, 17% RECYCLED POST INDUSTRIAL POLYESTER | 54K DOUBLE RUBS



auburn



chestnut



chinchilla



cornsilk



empire



lagoon



light grey



pumpkin



sprig



vanilla

KEYSTONE | 5H X 5.1V | 100% POLYESTER | 69K DOUBLE RUBS



black



chestnut



chinchilla



garnet



lagoon



plum



rust



sprig



vanilla



yellow





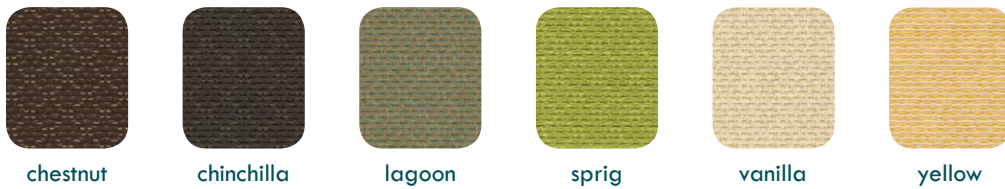
LAPALMA | 7.5H X 8.4V | 100% POLYESTER | 51K DOUBLE RUBS



PENINSULA | 15H X 15.6V | 100% POLYESTER | 51K DOUBLE RUBS



POLLEN | 1.3H X 1.3V | 60% COTTON, 40% POLYESTER | 51K DOUBLE RUBS



PORCELAIN | 7.5H X 7.3V | 54% POLYESTER, 30% RECYCLED POST INDUSTRIAL POLYESTER, 16% RECYCLED POST CONSUMER POLYESTER | 54K DOUBLE RUBS





REED | NO REPEAT | 93% POLYESTER, 7% COTTON | 51K DOUBLE RUBS



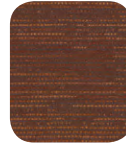
chestnut



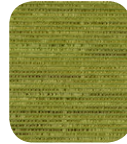
garnet



plum



rust



sprig



vanilla

REFLECT | 2.9H X 2.5V | 53% COTTON, 47% POLYESTER | 51K DOUBLE RUBS



chestnut



chinchilla



lagoon



plum



rust



sprig



vanilla



yellow

CONTINUOUS | 3.9H X 1.9V | 100% POLYESTER | 60K DOUBLE RUBS



auburn



black



charcoal



chinchilla



lagoon



linen



navy



pumpkin



sandlewood



sprig



yellow

GLAM | 7.5H X 13.1V | 42% COTTON, 42% POLYESTER, 10% RECYCLED POST INDUSTRIAL POLYESTER, 6% RECYCLED POST CONSUMER POLYESTER | 50K DOUBLE RUBS



auburn



black



chestnut



chinchilla



denim



pumpkin



sprig





HISTORY | 2.9H X 2.7V | 42% COTTON, 42% POLYESTER, 10% RECYCLED POST INDUSTRIAL POLYESTER, 6% RECYCLED POST CONSUMER POLYESTER | 75K DOUBLE RUBS



auburn



black



chinchilla



lagoon



linen



navy



pumpkin



sandlewood



sprig

IMAGINE | 1.9H X 2.6V | 54% POLYESTER, 30% RECYCLED POST INDUSTRIAL POLYESTER, 16% RECYCLED POST CONSUMER POLYESTER | 50K DOUBLE RUBS



black



chinchilla



lagoon



linen



navy



pumpkin



sandlewood



sprig



yellow

INFLUENCE | 2.9H X 2.1V | 41% POLYESTER, 40% COTTON, 10% RECYCLED POST INDUSTRIAL POLYESTER, 9% RECYCLED POST CONSUMER POLYESTER | 50K DOUBLE RUBS



chestnut



chinchilla



claret



denim



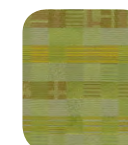
lagoon



linen



pumpkin



sprig



steel



yellow





IRIDESCENCE | 5.9H X 6.4V | 54% POLYESTER, 25% RECYCLED POST CONSUMER POLYESTER, 21% RECYCLED POST INDUSTRIAL POLYESTER | 50K DOUBLE RUBS



auburn



chinchilla



ice



pumpkin



sprig



steel

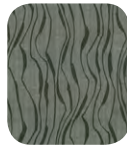
MOVEMENT | 5.9H X 8V | 60% COTTON, 40% POLYESTER | 100K DOUBLE RUBS



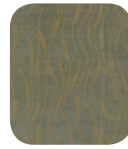
auburn



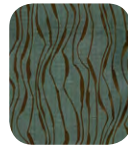
black



charcoal



chinchilla



lagoon



linen



navy



pumpkin



yellow

SOUND | 2.9H X 2.6V | 64% COTTON, 36% POLYESTER | 50K DOUBLE RUBS



black



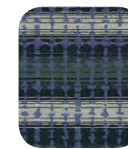
chestnut



chinchilla



pumpkin



royal





STIMULATE | 2.9H X 4V | 45% POLYESTER, 23% COTTON, 20% RECYCLED POST CONSUMER POLYESTER, 12% RECYCLED POST INDUSTRIAL POLYESTER | 50K DOUBLE RUBS



auburn



black



charcoal



chinchilla



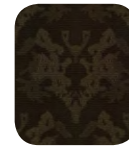
lagoon



linen



pumpkin



sandlewood



sprig



yellow

